

## Eugene Area Office Newsletter

### July 2022

All Siletz Tribal Offices Closed to public to limit the spread of the COVID-19 (Coronavirus). All Staff are operating on a limited basis and will return calls or emails within 48 hours. If you call, please leave a clear message with your name and phone number. The health and safety of employees, tribal members, clients and the community is important to us and we appreciate your patience during this time. Be Safe! Thank You!

The Tribe is in need of certified homes to care for Tribal Children in need of emergency, short term and long term placements.



To see how you can help please call today

Siletz Tribal Indian Child Welfare Department 541-444-8272

#### Pharmacy MAIL ORDER SERVICE AVAILABLE!!

**WE CAN NOW PROVIDE MAIL ORDER SERVICE TO ALL SILETZ TRIBAL MEMBERS:**

LIVING WITHIN THE 11 COUNTY SERVICE AREA

Please note that this service is **not eligible** for the "Auto-Fill" program. ALL "Auto-Fill" prescriptions must be picked up at the pharmacy. THANK YOU PHARMACY STAFF

#### EMERGENCY HOUSING ASSISTANCE FUNDING OPEN FOR 2022

Entire application must be complete before assistance can be provided. Assistance cannot exceed \$1,500.00 and participants may only access this program once every 3 (three) years. This program serves CTSI tribal members looking to avoid foreclosure, facing eviction and those that are homeless, anywhere in the United States of America. There is no waiting list for this program. Funds will be available once funds are received each fiscal year and will be offered based on a first-come, first-served basis. When funding has been exhausted, applications will no longer be accepted. Applications are available through the Siletz Tribal Housing Department, the CTSI website and all area offices

[www.ctsi.nsn.us](http://www.ctsi.nsn.us)

#### Need Rental Housing?

The Siletz Tribal Housing Department encourages you to apply for the Low Income Rental Program waiting list:

Siletz (1, 2, 3, 4 bedroom)  
Lincoln City (2, 3 bedroom)  
Neachesna Village  
Applications can be obtained on-line from the Siletz tribes' website or calling:

1-800-922-1399 Ext 1322

(541) 444-8322

FAX (541) 444- 8313

[www.ctsi.nsn.us](http://www.ctsi.nsn.us)

**2022**

Low-Income Energy Assistance Program (LIHEAP)

Low-Income Household Water Assistance Program (LIHWAP)

"Crisis/Shut-off/Regular" Electric or Water Bill

**~OPEN~**

All Siletz Tribal members and Households with tribal children.

(Income based). To see if you qualify or have questions. Contact: Casey Godwin by phone or email- 541-444-8311 [caseyg@ctsi.nsn.us](mailto:caseyg@ctsi.nsn.us)

You can also contact the Eugene A/O for applications: 541-484-4234

#### Email Reminders

If anyone would like reminders of special meetings, cultural classes or special events, etc. Contact Nora at the Eugene Area Office to be put on the email list.

Telephone: (541) 484-4234 or email: [noraw@ctsi.nsn.us](mailto:noraw@ctsi.nsn.us)

Chinook Winds Casino Resort  
Sign up for an electronic newsletter:

[www.chinookwindscasino.com](http://www.chinookwindscasino.com)

"Moving on is a process; Moving forward is a choice. There's a slight difference between the two. Moving on is letting things happen; moving forward is **making things happen**".

# Elders News

JULY 2022

Hi Everyone,

Well, June brought an end to the school year, Father's Day gatherings, lots of graduations and for me another birthday celebration, with my oldest granddaughter turning 10. Oh, my how time flies these days. I want to wish my Lane, Benton, and Linn County area elders a happy Birthday, (first names only). 😊 So Happy Birthday wishes are going out to our JULY elders, Karen, Adrienne, Henry, Kelly, Robert, and Joseph. With wishes for good health, wealth, prosperity, love, a day filled with lots of happiness, and fun throughout the year to come.

I cannot believe how this COVID is still getting people I know sick. Two aunties now and a cousin have gotten COVID in June! It is spring/summertime for heaven's sake! The saving grace is that with the vaccines and booster shots they were not deathly ill. But still please be careful out there this summer. I am wondering if the tribe is going to offer the second booster since it has been 6 months since they gave us the first booster. My youngest granddaughter turned 5 in May, and she got her vaccine without a peep. Brave little one she is. No adverse side effects either. So that was a blessing.

This last June we are still in phase 2 of not gathering in the area offices or provide transportation rides of any kind, per Tribal Council. But the good news is that our Jessica has been keeping us busy with Fresh produce each week. It really helps the grocery budget and the start of a CSA garden veggie and fruit box from the Lane County Youth Farm every Wednesday that we signed up for. With the cost of groceries this is just another blessing from our tribe and the awesome staff at the EAO. Plus, I am looking forward to outside Bingo night at the area parking lot on June 22<sup>nd</sup>. I will give details in next month's letter. :-)

The next monthly Diabetes dinner zoom meeting with Kim Lane is Thursday July 21<sup>st</sup>. 6-7 PM.

Since our Elders in person June meeting was cancelled due to catering issues, plans are in the works for our July Elders meeting to be held at the Salem RV Park at 1:00 pm now. Hope to see you all there. E-mail AJ Warren [ajw@ctsi.nsn.us](mailto:ajw@ctsi.nsn.us) and he will send you a link to join in. To contact the Elders Program for any event, use this number, 541-444-8212, be sure to leave your name, and phone number with your question and you will get a call from the Elders staff.

The dates of the Book Club for the next few zoom meetings will be the 2nd and 4th Thursday of each month from now on. For July it is the 14th and the 28th. I have a book now and we are reading chapter 12 for the next meeting. Looking forward to seeing your lovely face on the screen! ;-). Just let AJ Warren know you want to get the Book Club ZOOM link invitation address and he will send you one. His email is [ajw@ctsi.nsn.us](mailto:ajw@ctsi.nsn.us) and the Elders program phone number is 541-444-8212 for any questions.

Truly, Verdene McGuire. Eugene area Elders Representative, Lane, Linn, and Benton Counties

[VDenie101@gmail.com](mailto:VDenie101@gmail.com)

Cell: 503-890-0742



# Education – July 2022

Higher Ed · Adult Vocational Training (AVT) · Adult Education · JOM · Tribal Youth Employment and Education (TYEE)

## Upcoming Education Items

- **July and August Summer STREAM** – These kits are designed to enhanced learning and prevent learning loss during the Summer Break. This program is for enrolled JOM Students. Completed applications are due by 4:30pm on July 14th and the Microsoft form portion is due by 4:30pm on July 15<sup>th</sup>. Contact Candace to sign up.
- **Higher Education/AVT Orientation** – We will be having a required orientation for students applying for Higher Education and Adult Vocation Training programs. The orientation will be on July 21<sup>st</sup> at 6pm via Zoom. The link to this event will be emailed directly to applicants.
- **COVID-19 Youth Assistance** – In lieu of the traditional youth work program, The Confederated Tribes of Siletz Indians Education department is offering another year of our COVID-19 Youth Assistance stipend for Siletz tribal member youth between the ages of 14 – 18 years. All applicants must be returning to a high school or GED program in the fall and be 14 by July 1st, 2022. All seniors must provide a copy of transcripts for verification of grade level. Parents/ Guardians & students will need to submit their completed application by 4:30pm on August 1, 2022.
- **State Fair Tickets** – The JOM program is providing Oregon State Fair tickets for JOM registered Youth. The State Fair is a fun and education experience with exhibits like music, agriculture, arts and crafts, and animals. Registration is open from July 1<sup>st</sup> to August 5<sup>th</sup>. Each JOM youth that is registered will receive one ticket and up to two adult tickets per household. Email Candace to register.

## Education Program Opportunities

- **JOM** – Johnson O'Malley (JOM) benefits K-12 Native American students in support of their intellectual growth, vocational goals and cultural enrichment. The programs also advance the participant's physical, social and emotional growth. Basic services such as tutoring, cultural enhancement, recreational activities and college preparation classes are provided to supplement existing educational programs available in communities.
- **Siletz Tribal Youth Activity Fund** – The Youth Services Program focuses on the well-being of young people and advocates for the needs of youth. Tribal and other resources are used in developing positive community models. The program provides academic and leisure time activities in a supervised setting and young people participate in constructive pursuits after school and on weekends.
- **Online Tutoring** – We realize that schooling has experienced some difficulties regarding consistency. We are currently offering on demand as well as scheduled academic support available 24/7. This program is open to all students: K-12, Higher Ed, and AVT. Space is limited as hours are available. Contact Candace to sign up.

## Higher Ed/AVT Reminders

- Adult Education and AVT applications for clock hour schools/programs (such as beauty schools and truck driving programs) can be turned in at any point. If you are interested in applying to these programs, contact Candace for more information.

## Graduation Incentives

The Siletz Tribal Incentive Program recognizes Siletz tribal students for their academic achievements. Help celebrate your child's graduation or grade promotion by submitting a copy of their diploma, GED, or report card showing the change in grade. All Higher Ed/AVT students who graduate also need to send in their diploma or certificate. Email Candace for a graduation incentive application.

PreK – 12 Achievement	Incentive	Higher Ed/ AVT Achievement	Incentive
Headstart/Preschool	\$10	One Year AVT	\$100
Kindergarten	\$10	Two Year AVT	\$200
Elementary School	\$20	AA, AS, AAOT	\$200
Middle School	\$50	BA/BS	\$75 plus a Pendleton blanket
High school/GED	\$100	MA	\$300
		PhD	\$300 plus a Pendleton blanket



## 477-Self Sufficiency Program – Essential Services during COVID

The 477-Self Sufficiency Program (SSP) is open and providing essential services to eligible families and individuals residing in the CTSI 11-County Service Area. Due to Covid-19, all tribal offices are closed to the public. We are still accepting applications and conducting appointments over the phone, through email or video conference. The SSP has prioritized the following services:

- Pre-Temporary Assistance for Needy Families (Pre-TANF) / Non-Recurrent Short Term Benefits: Siletz families below 185% of the Federal Poverty Level (FPL) may be eligible for short-term financial assistance that doesn't exceed 4 months. The financial assistance is meant to provide basic needs and address short-term emergent needs;
- Regular Temporary Assistance for Needy Families: Siletz families below the countable income limits and FPL may be eligible for monthly grant assistance to meet basic needs;
- General Assistance for Single Adults: Siletz single adults below the countable income limits and FPL may be eligible for monthly grant assistance to meet basic needs;
- Emergency Assistance: Siletz families or single adults may be eligible for support services to prevent eviction or utility shut off. Income guidelines apply;
- Classroom Training: the Program is still providing financial assistance (tuition, stipends and support services) to eligible Native Americans attending GED, Higher Education or Vocational/Occupational Training.
- Childcare Assistance: The Program offers childcare assistance to eligible TANF families while they engage in work or self-sufficiency activities;
- Foster Care Support Services: Childcare assistance to employed foster parents. The Program covers "working hours only" and limited respite.
- Home Visiting: The Program is accepting new families into the Early Childhood Home Visiting Program and working with current families to provide lessons in-person. Staff and families will be required to adhere to social distancing and wearing masks.
- Direct Placement: Support services (work clothing, transportation, tools, etc.) for Native Americans that recently gained employment. Must apply within 7-days of hire.

Other services such as Work Experience and On-the-Job Training may be available on a limited basis.

If you recently lost your employment due to Covid-19 and need assistance to meet your basic needs, please contact your local CTSI Tribal Office for an application. Additional eligibility criteria apply. SSP staff will reach out to you by phone or email. You can also email [477SSP@ctsi.nsn.us](mailto:477SSP@ctsi.nsn.us) for more information. Please include your name, phone number and the city/county you reside in.

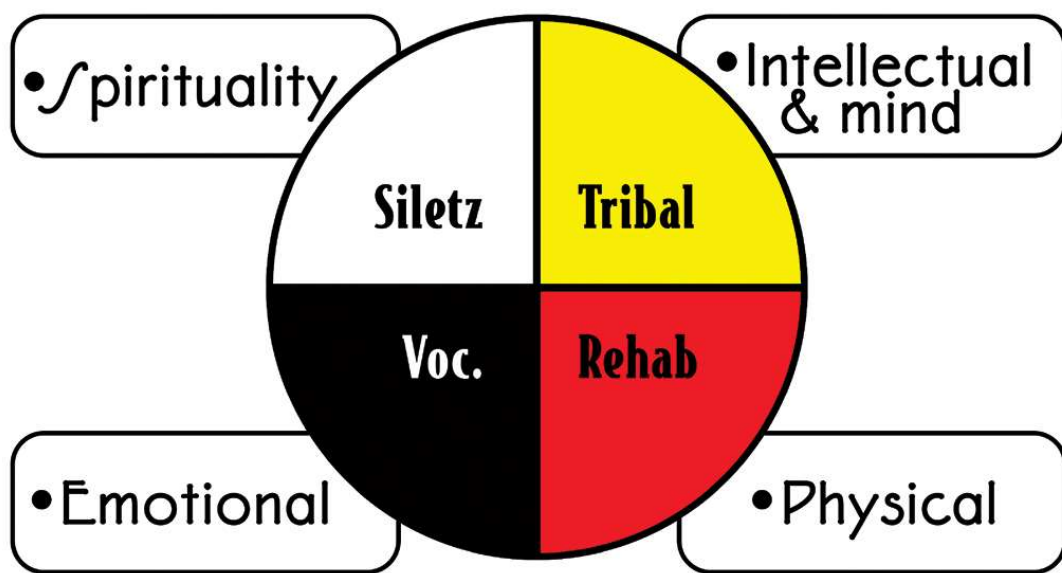


# Siletz Tribal Vocational Rehabilitation Program (STVRP)

STVRP is here to help members of ANY federally recognized Tribe (living within the Siletz Tribe's service area) with barriers to employment. We work with individuals who have disabilities.

## Examples of Services

- Guidance and counseling
- Referral to employment services
- Résumé writing
- Interviewing techniques
- Job coaching
- Culturally relevant and individualized services
- Evaluations, assessments and training placement opportunities
- Adaptive equipment



For more information about STVRP, please inquire at 800-922-1399. We also maintain resource and employment boards, so please make an appointment if you're interested. You can speak to VR staff in the following locations:

**Makayla Jackson**  
**Job Developer/Counselor**  
Eugene Area Office  
2468 W 11th Ave.  
Eugene, OR 97402  
541-484-4234, ext. 1752

**Toni Leija**  
**Job Developer/Counselor**  
Salem Area Office  
3160 Blossom Drive NE, STE 105  
Salem, OR 97305  
503-390-9494, ext. 1861

**Tamra Russell**  
**Job Developer/Counselor/TSS 1**  
Portland Area Office  
12790 SE Stark St., STE 102  
Portland, OR 97233  
503-238-1512, ext. 1411

**Jamie Bokuro**  
**Intake Specialist/Job Coach**  
Siletz Area Office  
201 SE Swan Ave.  
Siletz, OR 97380  
541-444-8266

# Siletz Home Visiting Program

Now serving all federally recognized and Alaskan Native families who meet eligibility criteria!!

## Home Visiting Provides:

- Parenting and life skills for successful and positive parenting
- Support and encouragement
- Resources and referrals
- A culturally sensitive, evidence based curriculum
- Ongoing services from prenatal until child is 3 years old
- Virtual Visits currently

## For more information contact:

Danelle Smith  
Siletz and Coast Range  
541-444-9603 or  
1-800-922-1399  
[danelles@ctsi.nsn.us](mailto:danelles@ctsi.nsn.us)

Lori Christy  
Salem, Portland and Surrounding Areas  
503-390-9494  
[loric@ctsi.nsn.us](mailto:loric@ctsi.nsn.us)

Cathy Ray  
Eugene and Surrounding Areas  
541-484-4234  
[catheriner@ctsi.nsn.us](mailto:catheriner@ctsi.nsn.us)

Go to [www.ctsi.nsn.us](http://www.ctsi.nsn.us) home visiting to view past success stories.

## Eligibility requirements:

- Live in 11-County Service Area
- Family is expecting or has an infant under twelve months of age.
- American Indian/Alaskan Native head of household or dependent child and meet one of the following criteria—
  - Income below 300% federal poverty level for last 30 days
  - Household that resides in rural location that has limited employment opportunities
  - First time parent
  - Household with at least one adult without a post-secondary certificate
  - Family experienced trauma, chemical dependency or mental health barriers.
- Other eligibility criteria may apply so contact our staff if you have questions.

# Home Visiting

Summer time is here and that means the possibility of more outside time. You can easily keep your toddler busy with these simple ideas.

## Pool Noodle Fun



Pool noodles aren't just for the pool! Here are some fun things you can try with pool noodles. Start out with a two to three different colors of pool noodles and if you can find a couple of different shapes that makes for even more fun. Cut them into one inch slices using a serrated knife.

- **Stack** the pool noodle pieces as tall as you can. Count how many pieces are in your tower. Practice doing a pattern – red, blue, red, blue etc.
- **Sort** the noodles by color. Put all the noodles into a large bin or box and have a smaller container for each color of noodle you have. Your child can sort the different colors into the smaller containers
- **Swimming** - Toss all the pool noodle pieces into a wading pool and add water. Children love to play in water. Remember to never leave a child unattended near water for even a moment. Even a small amount of water can be dangerous to a child. Add buckets and nets and your child will have lots of fun fishing for the noodles, filling up buckets and pouring.



- **Stamping** – when the pool noodle pieces are wet your child can use them to stamp a print on the sidewalk or patio.
- **Stringing** – See if you can string the pool noodles onto a long stick, piece of string or yarn or a jump rope. How many will fit? Keep an eye on children when they are playing with string or ropes so they don't get them wrapped around their necks.

These are just a few ideas to get you started. What other ideas do you have?

Home Visiting is for native families who are expecting a child or have an infant under the age of one. The program continues until the child turns three. For more information and to find out eligibility criteria contact Cathy Ray, Home Visitor- [catheriner@ctsi.nsn.us](mailto:catheriner@ctsi.nsn.us) or 541-484-4234 ext. 1756.



# **COUNSELING SERVICES**

**Mental Health counseling services are now  
available through the EAO!**

---

**Beginning in April 2022 – Virtual Sessions Available  
2468 W. 11<sup>th</sup> Ave.  
Eugene OR 97402**

---

**Please contact our team for an appointment:**

**Ro Zientara LPC (Mental Health Therapist)**

**&**

**Rowena Jackson (Peer Recovery Mentor)**

**At: 541.484.4234**



# Community Health: July 2022



Jamie Boe, Community Health Advocate

Phone: 541-484-4234 Email: [JamieBoe@ctsi.nsn.us](mailto:JamieBoe@ctsi.nsn.us)



## Siletz Community Health Phone Numbers

- Siletz Community Health Clinic **1-800-648-0449**
- Purchased/Referred Care (PRC) **1-800-628-5720**
- Siletz Clinic COVID Resource Line **541-444-9636**
- CARE Program **541-444-9680**



"Shu-'yi dee-ghayt-nin'sh- We are getting well"

## Siletz Mail Order Pharmacy

For prescription refills, please call the Siletz Community Health Clinic Pharmacy 7-10 days before you run out of your prescription. This allows the pharmacy time to contact your health care provider, if necessary, and mail it to you.

Pharmacy Refill Line: **541-444-9624**



## Indian Health Clinic Registration Forms Available at the Eugene Area Office

- Siletz Community Health Clinic & PRC (Siletz, OR)
- Ko-Kwel Wellness Center (Eugene, OR)
- Chemawa Indian Health Center (Salem, OR)



## Oregon Health Plan (OHP) Applications

Available at the Eugene Area Office, or you can apply online at: <http://www.OregonHealthCare.gov>

OHP Phone: **1-800-699-9075**



We are here to assist you with any questions that you may have about OHP.

Contact your Eugene CHA, Jamie @ **541-484-4234**

## Tribal Non-Emergency Medical Transportation Line: 541-444-9633



We provide transportation to and from medically related appointments *as a last resort* to Siletz tribal members who lack transportation. To determine eligibility for transport services, please call the Siletz transport hub at least 48 hours in advance and leave a detailed message. Someone will call you back within two days.

# Community Health: July 2022



Jamie Boe, Community Health Advocate

Phone: 541-484-4234 Email: [JamieBoe@ctsi.nsn.us](mailto:JamieBoe@ctsi.nsn.us)



## UV Safety Month

July is Ultraviolet Safety Month. In the summer months it's important to remember to protect our eyes and skin from the side effects of UV rays. Over exposure can lead to cancers that can occur in our skin, lips, and even in our eyes. Lengthy exposure to UV rays whether it's natural, or artificial like in a tanning bed, can cause most skin cancers including melanoma, basal cell, and squamous cell cancers. People who spend too much time in the sun may also experience premature aging of the skin, which can lead to wrinkles, and leathery skin. Too much UV exposure can cause a weakened immune system in people, causing vaccines to become less effective. Many of us have experienced a sunburn at some point in our lives. Sunburn can be very painful, and very dangerous, but the good news is these things are preventable if we take precautions.

- **Use Sunscreen:** The U.S. Food and Drug Administration (FDA) recommends that each person wears a sunscreen that has a sun protection factor (SPF) that is at least 15 and they should cover UV-A and UV-B rays.
- **Cover up:** Wear proper clothing such as pants, long sleeved shirts, hats, and sun glasses to protect you from harmful rays.
- **Stay in the Shade:** Midday the sun is at its most intense, try staying in a shaded area from 10am to 4pm to help protect your skin.

For More Information Visit: <https://www.aao.org/eye-health/tips-prevention/sun>



## Summer Safety Tips

1. Wear sunglasses.
2. Use Sunscreen of at least SPF 15.
3. Limit direct sun exposure to ~ 30-40 minutes at a time for most people, and ~ 10 minutes for very light skinned people.
4. Wear a bucket style hat.
5. Try to wear clothes that cover arms and legs.
6. Black clothing actually helps to block the sun and heat.
7. Wear a life jacket while swimming.
8. Don't drink & drive.
9. **HAVE FUN!!!** 😊😊😊



# Nutrition Education Class

August 12<sup>th</sup> 6pm-7pm



## Vegetarian Cooking on a Shoestring

### where

Online class through Zoom

### When

August 12th 6-7pm

### who

Open to Lane County adults on a limited food budget

### how

Registration is required. Sign up with Jamie Boe by emailing: [jamieboe@ctsi.nsn.us](mailto:jamieboe@ctsi.nsn.us) or call 541-484-4234

### details

Class is a interactive 45 minute to 1 hour class. You will receive tools to eat a vegetarian diet on a limited budget. Be a part of the fun!

## Would you like to learn to:

- Make the most of your food budget
- Plan healthy vegetarian meals
- Learn simple, flavorful vegetarian dishes



Please RSVP by August 11th with your Name, Phone #, and Email by contacting Jamie Boe, Community Health Advocate @ 541-484-4234 or email [JamieBoe@ctsi.nsn.us](mailto:JamieBoe@ctsi.nsn.us) . A zoom link will be provided to you shortly before the class date.

# Community Health: July 2022



Jamie Boe, Community Health Advocate

Phone: 541-484-4234 Email: [JamieBoe@ctsi.nsn.us](mailto:JamieBoe@ctsi.nsn.us)



## Commodity Supplemental Food Program: Service by Linn Benton Food Share

For seniors living in **Linn** and **Benton** counties, The Commodity Supplemental Food Program (CSFP) works to improve the health of:

Low-income persons at least **60 years of age** by supplementing their diets with nutritious USDA Foods, including:

- Dairy including milk and cheese
- Grains including cereals, long grain, and brown rice, assorted pastas
- Fruits including juices, raisins, and canned fruit
- Vegetables including potatoes, pasta sauce, canned vegetables, sweet potatoes, soups
- Proteins including canned meat, chili, stews, and peanut butter
- Legumes including dry and canned beans and dry lentils.

Recipients receive a box of food monthly.

Please contact **Susan James** at [sjames@communityservices.us](mailto:sjames@communityservices.us) or call **541-730-6390** for more information.

\* You can also request an application from **Jamie Boe, Community Health Advocate**.

CSFP Federal Poverty Guidelines -- 2022		
Household size	Monthly	Yearly
1	\$1,473	\$17,667
2	\$1,984	\$23,803
3	\$2,495	\$29,939
4	\$3,007	\$36,075
5	\$3,518	\$42,211
6	\$4,029	\$48,347
7	\$4,541	\$54,483
8	\$5,052	\$60,619
For each add'l household member, add...	512	6,136

# Transportation Program



The program provides non-emergency medical transportation for Siletz tribal members in the 11-county service area.



To request a transport, please call Richard Faber at 541 444-9633.



**ALL REQUESTS MUST  
BE MADE 48 HOURS  
AHEAD OF TIME**

# Domestic Violence & Sexual Assault

**Confidential - Culturally Specific - Advocacy Services**

- We serve members of the Siletz community
  - Enrolled members of any Tribe within our 11-county service area
  - Siletz Tribal members in any location

Educating and empowering our community to live a healthy, non-violent lifestyle that strengthens spirit for future generations.

**CARE office line and  
DV Advocate:**

**(541) 444-9680**

**SA Advocate:**

**(541) 444-9615**

**Education/Outreach**

**(541) 444-9638**

**24– Hour Hope Line:**

**(541) 994-5959**

**C - Community**

**A - Awareness**

**R - Respect**

**E - Empowerment**





**SILETZ CARE PROGRAM**

# Trauma Recovery Support Group

SELF Curriculum

Art Journals

Vision Boards

Native Medicine



This group is available to anyone age 18 and up who has experienced any form of trauma. We will follow the SELF Curriculum and meet via Zoom. This will be a closed group, if you are interested please contact Rachelle  
[RachelleE@etsi.nsn.us](mailto:RachelleE@etsi.nsn.us)



**WEDNESDAYS AT 5:30**

# Tobacco Prevention & Education Program (TPEP)

TPEP's role is to educate and create awareness on the harmful affects of commercial tobacco products.

There are many different types of commercial tobacco products including smoking, smokeless, and devices that are used to deliver nicotine and other harmful additives. These products cause harm in many ways.



TPEP continues to educate everyone on traditional tobacco and how it is used for ceremonial, spiritual and cultural purposes.



TPEP makes it a high priority to engage our youth about prevention and education.

TPEP provides direct services to the community and promotes resources for tobacco cessation including , smoke-free phone apps, build your own quit plan, NRT's, social media page, and quit kits for those who are interested.

**Please contact the TPEP Coordinator for more information at (541)444-9682**

**For 1-on-1 assistance 24 hours a day call 1-800-QUIT-NOW - For AI/AN line press option 7**



## Tipi Drawing

Name: \_\_\_\_\_

Address: \_\_\_\_\_

PHONE: \_\_\_\_\_ ROLL #: \_\_\_\_\_

For Siletz Tribal members to use during the Nesika Illahee Pow-Wow on Aug 12-13, 2022. One entry per household. Must be a Siletz Tribal member to enter.

Deadline for entries is June 30th 2022. Names will be drawn soon after the deadline. Return the form to Siletz Pow-Wow, Attn: Tipi Drawing, P.O. Box 549, Siletz, OR 97380

*Note: You do not win the Tipi. The drawing is only for a stay in the Tipi over Pow-Wow weekend.*

## 2022-2023 Siletz Royalty Applications

Applications are being accepted for 2022-2023 Miss Siletz, Junior Miss Siletz, and Little Miss Siletz. Applications must be turned in by the end of the work day (4:30 p.m.) no later than June 30th 2022. Applications may be sent to: Siletz Pow wow Committee, P.O. Box 549, Siletz, OR 97380.

Applications can be downloaded from the CTSI website located under the Pow wow tab.

If you have any questions, contact Buddy Lane at 1-800-922-1399 ext 1230 or 541-444-8230, [buddyl@ctsi.nsn.us](mailto:buddyl@ctsi.nsn.us)

**CONFEDERATED TRIBES OF SILETZ INDIANS**  
**Po Box 549 Siletz, OR 97380**  
**1-800-922-1399 \* (541)444-2532 \* FAX: (541) 444-8334**

**477-Self Sufficiency Program**  
**Tribal Youth 4-Week Series on Life Skills**  
**Application and Information Form**

Due to Covid-19 restrictions, the 477-Self Sufficiency Program (477-SSP) will not have Summer Youth Employment Opportunities. The Program will provide a 4-week series focusing on various life skills.

**Eligibility Requirements:**

- Application
- The online series will be open to 12-18 year olds who reside in households with at least one enrolled member of a federally recognized tribe.
- Live in the 11 County Service Area

**The 477-SSP will accept applications starting June 6, 2022 and the deadline to apply is July 1, 2022.**

The 4-week series will start July 12, 2022 and end on August 4, 2022. All virtual classes will take place on Zoom from 10:00am-12:00pm. Youth will receive a stipend after the 4-week series for each online classes they attend and each additional two-hour activity they complete. Youth who attend all 5 online classes and submit verification of completing the additional 6 hours of activities will receive a bonus.

Schedule:

**Week 1 – 07/12/2022**

Orientation, Expectations, Icebreakers, and Self-care  
Additional Activity: Self Care

**Week 2 – 07/19/2022**

Cooking and Finance  
Additional Activity: Meal Budgeting

**Week 3 – 07/26/2021**

Culture  
Additional Activity: Culture Activity and Volunteering

**Week 4 – 08/02/2022**

Education, Employment, and Volunteering

**Week 4 – 08/04/2022**

Close out

**Send Applications to:**  
[477ssp@ctsi.nsn.us](mailto:477ssp@ctsi.nsn.us) or Fax: (541) 444-8334

**CONFEDERATED TRIBES OF SILETZ INDIANS**  
**Po Box 549 Siletz, OR 97380**  
**1-800-922-1399 \* (541)444-2532 \* FAX: (541) 444-8334**  
 CTSI Attn: 477-SSP PO Box 549 Siletz, OR 97380

**477 – Self Sufficiency Program**  
**Summer Youth Life Skills Series Application**

Date: \_\_\_\_\_

Youth Name: \_\_\_\_\_ Tribal Roll# (if enrolled): \_\_\_\_\_  
Last name, First name

Mailing Address: \_\_\_\_\_  
City State Zip

Residence Address: \_\_\_\_\_  
City State Zip

Home Phone #: \_\_\_\_\_ Cell #: \_\_\_\_\_

Child's Email Address: \_\_\_\_\_

Parent Email Address: \_\_\_\_\_

**HOUSEHOLD COMPOSITION**

List all members currently in your household

Names of Adults 1 <sup>st</sup> then Children (Legal names)	Sex	Date of Birth	Relationship to Head of the Household	Tribal Roll #
			<b><i>SELF</i></b>	

By signing this application, I am agreeing that all the above information is correct and that I understand all eligibility requirements.

\_\_\_\_\_  
 Youth Signature

\_\_\_\_\_  
 Date

\_\_\_\_\_  
 Parent/Guardian Signature

\_\_\_\_\_  
 Date

# Enrolled JOM Students *School Supply/PPE Stipend Program*



*Applications open July 1st*

Enrolled JOM Students are eligible to apply for a BIA CARES funded School Supply/PPE stipend for the 2022-2023 school year.

These funds are to ensure students can purchase traditional school supplies and the necessary PPE (masks, sanitizer, wipes, etc.) to continue being safe in schools, on buses and in after school programs.

**Deadline to submit your application is  
August 1st at 4:30 PM**

The Microsoft Form must be completed by **August 2nd at 4:30 PM**

Contact the Education Specialist in your service area to request an application.

Candace Hill

Eugene Area

CandaceH@ctsi.nsn.us

541-484-4234

Katy Holland

Portland Area

KatyH@ctsi.nsn.us

503-238-1512

Sonya Moody-Jurado

Salem Area

SonyaMJ@ctsi.nsn.us

503-390-9494

Jeff Sweet

Siletz Area

JeffS@ctsi.nsn.us

541-444-8207

**477-Self Sufficiency Program  
Pandemic Emergency Assistance Fund  
School Clothing / School Supply Program**

The 477-Self Sufficiency Program (477-SSP) received limited funds from the American Rescue Plan Act of 2021. The funding allows the Program to provide limited non-recurrent short-term benefits for eligible Siletz Tribal member households. The 477-SSP will provide a one-time allowance for clothing and school supplies for children attending in-person classes for the 2022 – 2023 school year.

**Eligibility Requirements Include:**

- Application for Assistance;
- Siletz Tribal member household – Verification required;
- Reside in the United States;
- State issued identification for head of household;
- Receive regular Supplemental Nutrition Assistance (SNAP) or USDA Commodities – Verification required;
- Provide verification children are included in benefit group;
- School age children in Kindergarten through 17 years of age;
- Valid email address for head of household.
- W-9 form if the head of household is not a Siletz tribal member

The 477-SSP will accept applications from June 21, 2022 – August 12, 2022. All pending documentation must be submitted by August 19, 2022. If approved for services, the 477-SSP will issue a \$350.00 clothing allowance for eligible children and \$50.00 school supply allowance for eligible children.

Applicants will be served based on completion date on a first come first serve basis, as limited funding is available. Once the funding allocation has been reached, additional households will be denied. You will receive all correspondence from the 477-SSP via email. The Program will issue payments twice per month until funds are expended or the application deadline is met.

By completing this application, you understand that all funds must be applied to school clothing and school supplies for the children listed in the approval notice. Completing the attached application is not a guarantee of services even if the application is completed prior to August 12, 2022. The application is posted on the CTSI website. Please contact the staff below to be emailed an application.

**Send Applications to:**

[477ssp@ctsi.nsn.us](mailto:477ssp@ctsi.nsn.us)

CTSI

Attn: 477-SSP

3160 Blossom Dr. NE STE #105

Salem, OR 97305

Fax: (541) 444-8334

**For an online application:**

Ctsi.nsn.us (Services & Programs, Social & Employment Services, 477-Self Sufficiency Program)

**For Information:**

Angelica Espino - (503) 390-9494 ext. 1853

Lori Christy - (503) 390-9494 ext. 1863



# JOM ACTIVITY STATE FAIR TICKETS

**EDUCATION**  
at the FAIR:

**MUSIC**

**PLANTS**

**ANIMALS**

**ARTS & CRAFTS**

**AGRICULTURE**

Open to JOM Registered Youth within the 11-county Service Area.

Registration: July 1st - August 5th at 4:30pm

Each JOM registered youth will receive 1 ticket and are eligible for up to 2 adult tickets per household  
AND a free COVID Care Kit

Contact your area Education Specialist to sign up

[Katy Holland](#)

Portland Area  
(503) 238-1512  
katyh@ctsi.nsn.us

[Sonya Moody-Jurado](#)

Salem Area  
(503) 390-9494  
sonyamj@ctsi.nsn.us

[Jeff Sweet](#)

Siletz Area  
(541) 444-8207  
jeffs@ctsi.nsn.us

[Candace Hill](#)

Eugene Area  
(541) 484-4234  
candaceh@ctsi.nsn.us

# JOM Youth Summer STREAM Kits

BIA CARES Summer STREAM kits are designed to enhance learning and prevent learning loss during Summer Break.

## July

Applications open July 1st

Deadline to submit your application is July 14th at 4:30 PM.

The Microsoft Form must be completed by July 15th at 4:30 PM.

## August

Applications open July 25th

Deadline to submit your application is August 4th at 4:30 PM.

The Microsoft Form must be completed by August 5th at 4:30 PM.

If you apply for the July kit by the deadline, you won't need to complete a new application for August.

### Contact your Education Specialist for an application.

Katy Holland	Sonya Moody-Jurado	Candace Hill	Jeff Sweet
Portland Area	Salem Area	Eugene Area	Siletz Area
KatyH@ctsi.nsn.us	SonyaMJ@ctsi.nsn.us	CandaceH@ctsi.nsn.us	JeffS@ctsi.nsn.us
503-238-1512	503-390-9494	541-484-4234	541-444-8207

Kits available on a first-come, first-served basis.

Must be currently enrolled in the JOM program and between the ages of 3-18.



# We're Back!

Calling All Gamers K-12

## CTSI

### Minecraft Gathering

# JULY 9, 2022 @ 10:30 AM

Contact Elizabeth Madden @  
[elizabethm@ctsi.nsn.us](mailto:elizabethm@ctsi.nsn.us) for details or  
questions





**ARE YOU PREDIABETIC AND WANT  
SUPPORT AVOIDING NEGATIVE HEALTH  
OUTCOMES?**

**REVERSE PRE-DIABETES WITH  
HELP FROM OUR CULTURALLY  
SPECIFIC LIFE COACHES**

**BEGINS JULY 12TH 2022**

*Participation requires people be  
committed to attending sessions weekly,  
providing data on either weight changes  
or blood sugar levels week to week, and be  
willing to track food and exercise.*

Register at:

**<https://SiletzDPP.eventbrite.com>**

---

**WE OFFER A SUPPORTIVE,  
TRAUMA INFORMED, AND  
POSITIVE BASED PROGRAM BY  
CERTIFIED LIFE COACHES**



## “First Cut Wood For The Elders Day”

The Tribal Natural Resources Committee and Natural Resources Department will sponsor the first “Cut Wood for The Elders Day” of the year on **Saturday, July 16<sup>th</sup>**. The woodcut will be held on the **Tribe’s Logsdan Road Property to the right of the Tribal Food Distribution Warehouse** in Siletz. We need lots of volunteers to help cut, split and deliver firewood for Tribal elders. Bring your chainsaws, hydraulic wood splitters, splitting mauls, axes, and lots of energy. Even if you don’t have any of those we can use the moral support! Lunch, drinks, and snacks will be provided. We will start at **8:00 AM** and go until around 2:00 pm

The goal of this event will be to deliver firewood to as many elders as possible. The Elders’ Program maintains a list of elders that burn wood for their winter heat. People willing to haul firewood to elders outside of the Siletz area, please contact the Elders Program Clerk at 1-800-922-1399 ext. 1261 or 541-444-8261 to be paired up with an elder in need. We especially need folks who can haul wood to the Eugene, Salem, and Portland areas. Elders in need of firewood should also contact the Elders Program Clerk to get their name on the delivery list.

If you have parents or grandparents that burn wood in the winter to stay warm, you need to help out at this event! Be sure to mark your calendars for the final woodcut of the year that will be held on September 17<sup>th</sup>.



# Siletz Suicide Prevention Community Event

JULY 19, 2022 @ 5:00 PM TO 6:00  
PM VIA ZOOM

- 988 Crisis Line Information
- Other resources for suicide prevention
- Community Support
- Everyone is welcome

Coming in  
July 2022

**Dial 988**

from any phone to get help.

If you need immediate help now,  
Text INDIGENOUS to 741741.



## Contact for Details:

Elizabeth Madden: [elizabethm@ctsi.nsn.us](mailto:elizabethm@ctsi.nsn.us)

Jacob Reid: [jacobr@ctsi.nsn.us](mailto:jacobr@ctsi.nsn.us)

**Please sign up by 11th to receive a  
gift for participation**



# KNOW YOUR RISK FOR PREDIABETES

## GET SCREENED TODAY

**American Indians are at higher risk for prediabetes.**

Prediabetes means your blood sugar level is higher than normal, but not high enough to be diagnosed as diabetes.

Having prediabetes puts you at higher risk for developing type 2 diabetes, a disease that comes with serious health problems.

That's why it's important to know the risk factors.



**AGE 45 OR OLDER**



**OVERWEIGHT**



**FAMILY HISTORY OF TYPE 2 DIABETES**



**DIABETES WHILE PREGNANT**



**ADULTS IN THE UNITED STATES HAS PREDIABETES.**

**90% OF THEM AREN'T AWARE THAT THEY DO.**



**READY TO MAKE HEALTHY CHOICES?**

**CALL 1-800-4-A-DACT**

for an introduction to the National Diabetes Prevention Program

# Prediabetes Risk Test

## 1. How old are you?

- Younger than 40 years (0 points)
- 40–49 years (1 point)
- 50–59 years (2 points)
- 60 years or older (3 points)

Write your score in the boxes below

## 2. Are you a man or a woman?

- Man (1 point)
- Woman (0 points)

## 3. If you are a woman, have you ever been diagnosed with gestational diabetes?

- Yes (1 point)
- No (0 points)

## 4. Do you have a mother, father, sister, or brother with diabetes?

- Yes (1 point)
- No (0 points)

## 5. Have you ever been diagnosed with high blood pressure?

- Yes (1 point)
- No (0 points)

## 6. Are you physically active?

- Yes (0 points)
- No (1 point)

## 7. What is your weight category?

(See chart at right)

Height	Weight (lbs.)		
4'10"	119-142	143-190	191+
4'11"	124-147	148-197	198+
5'0"	128-152	153-203	204+
5'1"	132-157	158-210	211+
5'2"	136-163	164-217	218+
5'3"	141-168	169-224	225+
5'4"	145-173	174-231	232+
5'5"	150-179	180-239	240+
5'6"	155-185	186-246	247+
5'7"	159-190	191-254	255+
5'8"	164-196	197-261	262+
5'9"	169-202	203-269	270+
5'10"	174-208	209-277	278+
5'11"	179-214	215-285	286+
6'0"	184-220	221-293	294+
6'1"	189-226	227-301	302+
6'2"	194-232	233-310	311+
6'3"	200-239	240-318	319+
6'4"	205-245	246-327	328+
	<b>1 Point</b>	<b>2 Points</b>	<b>3 Points</b>
	You weigh less than the 1 Point column (0 points)		

Total score:

Adapted from Bang et al., Ann Intern Med 151:775-783, 2009. Original algorithm was validated without gestational diabetes as part of the model.

## If you scored 5 or higher

You are at increased risk for having prediabetes and are at high risk for type 2 diabetes. However, only your doctor can tell for sure if you have type 2 diabetes or prediabetes, a condition in which blood sugar levels are higher than normal but not high enough yet to be diagnosed as type 2 diabetes. **Talk to your doctor to see if additional testing is needed.**

Type 2 diabetes is more common in African Americans, Hispanics/Latinos, American Indians, Asian Americans, and Pacific Islanders.

Higher body weight increases diabetes risk for everyone. Asian Americans are at increased risk for type 2 diabetes at lower weights (about 15 pounds lower than weights in the 1 Point column).

## You can reduce your risk for type 2 diabetes

Find out how you can reverse prediabetes and prevent type 2 diabetes through a **CDC-recognized lifestyle change program** at <https://www.cdc.gov/diabetes/prevention/lifestyle-program>.

Risk Test provided by the American Diabetes Association and the Centers for Disease Control and Prevention.





# T-shirt contest!



**IMPALAS CAR CLUB IN RECOVERY  
RAISING AWARENESS ON HUMAN  
TRAFFICKING THROUGH A HARM  
REDUCTION LENS IN INDIAN COUNTRY.**



Send in a design no later than July 22, 2022 @ 4:30  
to [Sheilaa@ctsi.nsn.us](mailto:Sheilaa@ctsi.nsn.us)



For a chance to win a \$200 Amazon gift card. Your  
design will be put on T-shirts, stickers and more!





# HIGHER EDUCATION AND AVT PROGRAM



# ORIENTATION



JULY 21ST, 2022 AT 6PM VIA ZOOM



**REQUIRED FOR ALL HIGHER  
EDUCATION/AVT PROGRAM APPLICANTS  
-NEW AND RETURNING STUDENTS-**



CHECK YOUR EMAIL FOR THE ZOOM LINK  
FROM YOUR AREA EDUCATION SPECIALIST



SIGN UP TODAY FOR **SUMMER SESSION** ON-LINE  
**LANGUAGE CLASSES**

LEARN  
NUU-WEE-YA'

**TUESDAYS JULY 26-AUGUST 30**

5:00 PM-BEGINNING CONVERSATION 1

5:45 PM- BEGINNING CONVERSATION 2

**THURSDAYS JULY 28-SEPTEMBER 1**

5:00 PM-ONGOING CONVERSATION

**SATURDAYS 8/6 AND 8/27**

NOON-IMMERSION CONVERSATION HOUR

TO SIGN UP CONTACT NICK VILES AT [NICKV@CTSLNSN.US](mailto:NICKV@CTSLNSN.US) OR 541-484-4234 X1757







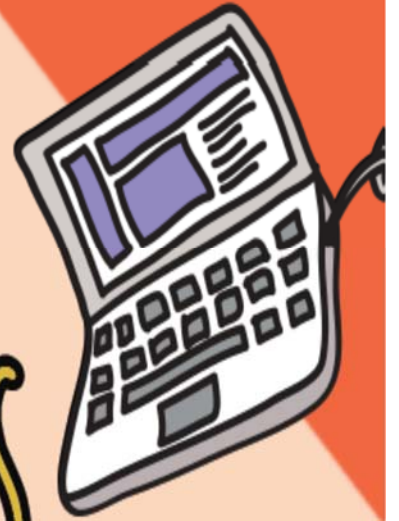
# YOUTH SUMMER LANGUAGE CLASSES

THURSDAYS JULY 28-SEPTEMBER 1  
AT 1 PM

- Open to all tribal youth
- Fun, games, and language learning
- On-line over Zoom

TO SIGN UP CONTACT NICK VILES AT [NICKV@CTSI.NSN.US](mailto:NICKV@CTSI.NSN.US) OR 541-484-4234 X1757

# CTSI VIRTUAL CULTURE NIGHTS



ALL TRIBAL MEMBERS AND FAMILIES WELCOME

***Upcoming Dates:***

***July: No Virtual Class***

***August 24 at 6pm: Cooking Fish***

***Sponsored by the Education and Culture Departments  
Contact Nick Viles at [nickv@ctsi.nsn.us](mailto:nickv@ctsi.nsn.us) or 541-484-4234 x1757 to sign up***

2022-2023 Hunting and Fishing Tags  
Distribution Schedule

**Tribal offices are closed to the public due to COVID-19 restrictions. Tribal members wanting a tag should call to have tags mailed to them beginning the first date of tag issuance 541-444-8227 or 541-444-8232**

Type of Tag		Number Available	Season Dates	Date to Start Tag Issuance	Method of Issuance
<b>Deer</b>	Early Archery***	50	8/27-9/25	8/1 at 8:00 AM at Natural Resources Office	First Come First Served*
	General Rifle	375	10/1-11/4**	8/15	First Come First Served*
	Antlerless – Adult	12	10/1-11/4	Lottery applications available 8/1; due <b>8/26</b> ; drawing 9/6; tags issued 9/7	Lottery – Open to Elders Only
	Antlerless –Youth	8	10/1-11/6	Lottery applications available 8/1; due <b>8/26</b> ; drawing 9/6; tags issued 9/7	Lottery – Open to Youth Ages 12-17 Only
	Late Archery	50 (minus # of early season tags filled)	11/19-12/11	<i>First Distribution:</i> 10/17 at 8:00 AM at NR Office <i>Second Distribution:</i> 10/31 at 8:00 AM at NR Office (see Note 2 below)	First Come First Served*
<b>Elk</b>	Antlerless - Youth	3	8/15-12/31	Lottery applications available 6/1; due <b>7/1</b> ; drawing 7/5; tags issued 7/6	Lottery – Open to Youth Ages 12-17 Only
	Early Archery	25	8/27-9/25	8/1 at 8:00 AM at Natural Resources Office	First Come First Served*
	1 <sup>st</sup> Season Rifle	25	11/12-11/15	Lottery applications available 8/29; due <b>9/23</b> ; drawing 10/3; tags issued 10/4	Lottery
	2 <sup>nd</sup> Season Rifle	25	11/19-11/25		
	Antlerless	15	1/1/23-3/31/23	Lottery applications available 8/29; due <b>9/23</b> ; drawing 10/3; tags issued 12/1	Lottery
	Late Archery Antlerless	56	11/26-12/11	<i>First Distribution:</i> 10/17 at 8:00 AM at NR Office <i>Second Distribution:</i> 10/31 at 8:00 AM at NR Office (see Note 2 below)	First Come First Served*
<b>Salmon</b>	Salmon	200	11/1-12/30 (estimate)	8/15	First Come First Served

\* No early calls to “save” a tag for someone. Must call to have a tag mailed no earlier than the first day of distribution.

\*\* Season for Youth ages 12-17 is 10/1 - 11/6 (2 additional days at end of general season)

\*\*\* **Unfilled Deer Early Bow tags must be returned to Natural Resources by 10/7.**

NOTE 1: A Tribal member may obtain only ONE elk tag in their name during the 2022-2023 hunting season (bow, bull and cow tags all count towards the one tag), except as noted below.

NOTE 2: *First Distribution:* For hunters who have not been issued an early season deer archery tag (for deer tags) or any elk tag (for elk tags).

*Second Distribution:* For any eligible hunter, regardless of what other tags they have received.

CONFEDERATED TRIBES OF SILETZ INDIANS  
ANNUAL NESIKA ILLAHEE POW-WOW

**AUGUST 13<sup>TH</sup>**

**"THE PEOPLE ARE DANCING AGAIN"**

**Pauline Ricks Memorial Pow-Wow Grounds  
Government Hill, Siletz, OR**



**Friday, Aug 12th  
Royalty Pageant Friday 4PM**

**Saturday, Aug 13th**

**Presentation of the  
Crowns - 11AM**

**Grand Entry at 1PM**

*Salmon Dinner*

*Following Grand Entry*

**Grand Entry at 7PM**

**ONE DAY SOCIAL POW-WOW | SATURDAY, AUG 13TH**

**NO COMPETITION**

**All Dancers and Drummers Welcome | Drummers Please Bring Your Own Chairs**  
**Alcohol and Drug Free Event • All Are Welcome to Attend!**  
**Camp Grounds Open Friday at 8:00 AM**

Camping available Friday and Saturday. Camping Fee \$25 | \$5 Pet Fee (camping area)

Vendor registration is required.

For More Information visit <https://www.ctsi.nsn.us/heritage/pow-wow/>

or Call 800-922-1399 Buddy Lane Ext. 1230

Sponsored by Chinook Winds Casino Resort & Pepsi Bottling Co.

# Produce Plus Food Rescue



## Siletz Tribal Members:

If you or your family would like to share in some *FREE*, fresh produce, You may pick it up at the Siletz/Eugene Area office on Tuesday between 2 and 4:00 pm. Any produce that is not picked up at this time can be picked up later on in the week from 9 am-4pm. It just will not be as fresh. On occasion we will have non-perishable and frozen items available.

Since our tribal office remains closed to the public during the COVID-19 pandemic, the food distribution will take place outside the building. Face masks and social distancing are required. If you don't have a mask, one will be provided.

Please bring your own bags or cooler to transport your food. You may call ahead and check on the availability of food.

Siletz Office: 541-484-4234  
2468 W. 11<sup>th</sup> Avenue, Eugene, OR

This food is collected and distributed by Food for Lane County, Eugene, OR. The Siletz tribe and FFLC are working in a joint effort to alleviate hunger in our community.

# USDA distribution dates for July 2022

## Siletz

Tuesday	July 5 <sup>th</sup>	9 a.m. – 3 p.m.
Wednesday	July 6 <sup>th</sup>	9 a.m. – 3 p.m.
Thursday	July 7 <sup>th</sup>	9 a.m. – 3 p.m.
Friday	July 8 <sup>th</sup>	9 a.m. – 3 p.m.
Monday	July 11 <sup>th</sup>	9 a.m. – 3 p.m.

## Salem

Monday	July 18 <sup>th</sup>	1:30 – 6:30 p.m.
Tuesday	July 19 <sup>th</sup>	9 a.m. – 6:30 p.m.
Wednesday	July 20 <sup>th</sup>	<b>By appt only</b>



Plan out a weekly or monthly meal plan from recipes

**LIKE us on Facebook at Siletz Tribal FDIPIR.** We would like to see more people sharing their recipes on our FB page. Like us at SILETZ TRIBAL FDIPIR.

Sammy Hall, USDA Program Director  
[sammyh@ctsi.nsn.us](mailto:sammyh@ctsi.nsn.us)

Siletz 541-444-8279 FAX: 541-444-8306  
Salem 503-391-9869 FAX: 503-391-4296

# July 2022

Sun	Mon	Tue	Wed	Thu	Fri	Sat
26	27	28	29	30 <b>Deadlines:</b> Tribal Members  Tipi Drawing  2022 Royalty Applications	1 Produce Plus Food 9-4pm  <b>Deadline</b> Tribal Youth – Life Skills  <b>Opens Up</b> COVID-19 Tribal Youth Assistance Stipend  JOM-Youth Summer Stream Kits  JOM-State Fair Tickets  JOM-School Supply/PPE Stipend Program	2
3	4 All Siletz Tribal Office Closed  	5 USDA Distribution Siletz 9-3pm  Produce Plus Food 2-4pm	6 USDA Distribution Siletz 9-3pm  Produce Plus Food 9-4pm	7 USDA Distribution Siletz 9-3pm  Produce Plus Food 9-4pm	8 USDA Distribution Siletz 9-3pm  Pay Day  Produce Plus Food 9-4pm	9 Elders Meeting 1pm  Minecraft Gathering ZOOM Starts @10:30am
10	11 USDA Distribution Siletz 9-3pm	12 Time Sheets Due  Produce Plus Food 2-4pm  Pre-Diabetes Sessions Start (See Flyer)	13 Produce Plus Food 9-4pm	14 Produce Plus Food 9-4pm  JOM Youth Summer Stream Kits <b>CLOSES</b>	15 Produce Plus Food 9-4pm	16
17	18 USDA Distribution Salem 1:30-6:30pm	19 USDA Distribution Salem 9-6:30pm  Produce Plus Food 2-4pm  Suicide Prevention Event via ZOOM 5-6pm	20 USDA Distribution Salem <b>By Appt. ONLY</b>  Produce Plus Food 9-4pm	21 Produce Plus Food 9-4pm  Higher Education/AVT Orientation 6pm Via ZOOM	22 Pay Day  Produce Plus Food 9-4pm  T-Shirt Contest (See flyer)	23
24	25	26 Time Sheets Due  Produce Plus Food 2-4pm  Language Class Beginning Conversation (1) 5pm Conversation (2) 5:45 ZOOM	27 Produce Plus Food 9-4pm	28 Produce Plus Food 9-4pm  Youth Summer Language Classes 1pm ZOOM  Language Class Ongoing Conversation 5pm ZOOM	29 Produce Plus Food 9-4pm	30
31						

The Confederated Tribes of Siletz Indians  
The Eugene Area Office Staff  
541-484-4234 1-800-922-1399

Jessica Hibler, Supervisor x1751 [jessicah@ctsi.nsn.us](mailto:jessicah@ctsi.nsn.us)  
Nick Viles, Language/Traditional Arts Instructor x1757 [nickv@ctsi.nsn.us](mailto:nickv@ctsi.nsn.us)  
Candace Hill, Education Specialist/JOM x1763 [candaceh@ctsi.nsn.us](mailto:candaceh@ctsi.nsn.us)  
Jenifer Jackson, Tribal Service Specialist/477SSP x1755 [jeniferj@ctsi.nsn.us](mailto:jeniferj@ctsi.nsn.us)  
Cathy Ray, Intake Specialist/Job Coach x1756 [catheriner@ctsi.nsn.us](mailto:catheriner@ctsi.nsn.us)  
Makayla Jackson, Job Developer/Counselor/VRD X1752 [makaylaj@ctsi.nsn.us](mailto:makaylaj@ctsi.nsn.us)  
Jamie Boe, Community Health Advocate x1753 [jamieboe@ctsi.nsn.us](mailto:jamieboe@ctsi.nsn.us)  
Ro Zientara, Mental Health Therapist x1758 [rzientara@ctsi.nsn.us](mailto:rzientara@ctsi.nsn.us)  
Rowena Jackson, Peer Recovery Mentor x1758 [rowenaj@ctsi.nsn.us](mailto:rowenaj@ctsi.nsn.us)  
Nora N Williams-Wood, Clerk x1750 [noraw@ctsi.nsn.us](mailto:noraw@ctsi.nsn.us)  
Verdene McGuire, Eugene A/O Rep. [vdeniel01@gmail.com](mailto:vdeniel01@gmail.com)  
Vacant, Elders On-Call Transport

“If you surround yourself with positive people who build you up,  
the sky is the limit”.

The Confederated Tribes of Siletz Indians  
Eugene Area Office  
2468 W 11<sup>th</sup> Avenue  
Eugene Oregon 97402

**Youth Antlerless Elk Hunt**  
**Applications Due**  
**July 1, 2022**  
**3 Tags**

Hunt runs from  
August 15 to December 31

Applications available at kiosk  
at the back door of the Tribal  
Admin office in Siletz and on  
the Tribal website under  
Natural Resources beginning  
June 1

Open to Tribal youth age 12-17  
who have a valid Hunter Safety  
Card

Call Natural Resources Manager  
Mike Kennedy at 541-444-8232  
if you have questions

Address