

# The Eugene Area Office Newsletter January 2022

All Siletz Tribal Offices Closed to public to limit the spread of the COVID-19 (Coronavirus). All Staff are operating on a limited basis and will return calls or emails within 48 hours. If you call, please leave a clear message with your name and phone number. The health and safety of employees, tribal members, clients and the community is important to us and we appreciate your patience during this time. Be Safe! Thank You!

The Tribe is in need of certified homes to care for Tribal Children in need of emergency, short term and long term placements.



To see how you can help please call today  
Siletz Tribal Indian Child Welfare Department 541-444-8272

### Pharmacy MAIL ORDER SERVICE AVAILABLE!!

### WE CAN NOW PROVIDE MAIL ORDER SERVICE TO ALL SILETZ TRIBAL MEMBERS:

LIVING WITHIN THE 11 COUNTY SERVICE AREA

Please note that this service is **not eligible** for the "Auto-Fill" program. ALL "Auto-Fill" prescriptions must be picked up at the pharmacy. THANK YOU PHARMACY STAFF

### EMERGENCY HOUSING ASSISTANCE FUNDING OPEN FOR 2022

Entire application must be complete before assistance can be provided. Assistance cannot exceed \$1,500.00 and participants may only access this program once every 3 (three) years. This program serves CTSI tribal members looking to avoid foreclosure, facing eviction and those that are homeless, anywhere in the United States of America. There is no waiting list for this program. Funds will be available once funds are received each fiscal year and will be offered based on a first-come, first-served basis. When funding has been exhausted, applications will no longer be accepted. Applications are available through the Siletz Tribal Housing Department, the CTSI website and all area offices

[www.ctsi.nsn.us](http://www.ctsi.nsn.us)

### Need Rental Housing?

The Siletz Tribal Housing Department encourages you to apply for the Low Income Rental Program waiting list:

Siletz (1, 2, 3, 4 bedroom)  
Lincoln City (2, 3 bedroom)  
Neachesna Village.

Applications can be obtained on-line from the tribal website, follow links; Tribal Services-Housing-Low Rent Apartments & Home Ownership. For any questions call:

1-800-922-1399 Ext 1322

(541) 444-8322

FAX (541) 444- 8313

[www.ctsi.nsn.us](http://www.ctsi.nsn.us)

2022

Low-Income Energy Assistance Program (LIHEAP)

~OPEN~

Crisis/ Regular heating

All Siletz Tribal Households  
Crisis/Shut-off/Regular OPEN

Siletz Tribal Members and households

Contact: Casey Godwin

541-444-8311 [caseyg@ctsi.nsn.us](mailto:caseyg@ctsi.nsn.us)

### Email Reminders

If anyone would like reminders of special meetings, cultural classes or special events, etc. Contact Nora at Eugene Area Office to be put on email list.

Telephone: (541) 484-4234 or

email: [noraw@ctsi.nsn.us](mailto:noraw@ctsi.nsn.us)

Chinook Winds Casino Resort

Sign up for an electronic newsletter:

[www.chinookwindscasino.com](http://www.chinookwindscasino.com)

You can only  
Achieve your  
dreams when you  
start believing in  
yourself...

Happy  
New  
Year

# Education – January 2022

Candace Hill, Education Specialist

[candaceh@ctsi.nsn.us](mailto:candaceh@ctsi.nsn.us)

(541) 484-4234 x1763

(541) 270 - 0037

Higher Ed · Adult Vocational Training (AVT) · Adult Education · JOM · Tribal Youth Employment and Education (TYEE)

## Upcoming Virtual Education Events

- **College Info Night Part II** – Join the education team as we learn about CTSI's different higher education programs. In this session we will talk with the Siletz Tribal Student Housing Program, the 477 Self-Sufficiency Program, and we will meet representatives from colleges and universities. Please contact Candace for the link to the Zoom.
- **School Supplies/PPE Stipend** – JOM enrolled students are eligible to apply for a School Supply/PPE stipend for the remainder for the current academic school year to ensure students can purchase traditional school supplies and the necessary PPE to continue being safe in schools, on busses, and in after school programs. Completed applications must be received by January 26<sup>th</sup>, 2022 at 4:30pm and the necessary Microsoft Form must be completed by January 28<sup>th</sup>, 2022 at 4:30pm. Contact Candace to request an application.
- **Small Business Workshop** – Do you currently have a small business or thinking about starting one? We will have the Oregon Native American Chamber of Commerce (ONACC), Our Native American Business Network (ONABEN), and the Siletz Tribal Business Corporation (STBC) as guests at the workshop. This event is open to all tribal members but it is important to note that the presenters will be primarily focusing on Oregon and southwest Washington. Much of the information provided during this workshop is useful to all members interested in starting or looking for information on already established small businesses.

## Education Program Opportunities

While our area office remains closed to the public, we are still committed to supporting Tribal members during this time. Our activities remain virtual. Below are this month's highlights. If you are interested please call or email Candace to sign up for the Youth Activities email list or check out the CTSI youth Facebook page and the CTSI website for up-to-date announcements about online events, at home activities and more.

- **JOM Winter Activities Send Out** – Do you want to receive fun and educational activities for January and February 2022? Registration opens January 3<sup>rd</sup> and February 1<sup>st</sup> and closes January 13<sup>th</sup> and February 14<sup>th</sup> at 4:30pm. It is open to JOM registered youth who live in the 11-county service area. Contact Candace to register.
- **JOM** – Johnson O'Malley (JOM) benefits K-12 Native American students in support of their intellectual growth, vocational goals and cultural enrichment. The program also advances the participant's physical, social and emotional growth. Basic services such as tutoring, cultural enhancement, recreational activities and college preparation classes are provided to supplement existing educational programs available in communities.
- **Siletz Tribal Youth Activity Fund** – The Youth Services Program focuses on the well-being of young people and advocates for the needs of youth. Tribal and other resources are used in developing positive community models. The program provides academic and leisure time activities in a supervised setting and young people participate in constructive pursuits after school and on weekends.
- **Online Tutoring** – We realize that schooling has experienced some difficulties regarding consistency. We are currently offering on demand as well as scheduled academic support available 24/7. This program is open to all students: K-12, Higher Ed, and AVT. Space is limited as hours are available. Contact Candace to sign up.

## Higher Ed/AVT Reminders

- The Free Application for Federal Student Aid aka FAFSA opened on Friday, October 1<sup>st</sup>, 2021. You can fill out your application at [financialaid.gov](http://financialaid.gov). If you are interested in applying to Higher Ed or certain AVT programs, FAFSA needs to be done no later than June 30<sup>th</sup>, 2022. Early bird gets the worm!
- Adult Education and AVT applications for clock hour schools/programs (such as beauty schools and truck driving programs) can be turned in at any point. If you are interested in applying to these programs, contact Candace for more information.

## Graduation Incentives

The Siletz Tribal Incentive Program recognizes Siletz tribal students for their academic achievements. Help celebrate your child's graduation or grade promotion by submitting a copy of their diploma, GED, or report card showing the change in grade. All Higher Ed/AVT students who graduate also need to send in their diploma or certificate. Email [Candaceh@ctsi.nsn.us](mailto:Candaceh@ctsi.nsn.us) for a graduation incentive application.

| PreK – 12 Achievement | Incentive | Higher Ed/ AVT Achievement | Incentive                      |
|-----------------------|-----------|----------------------------|--------------------------------|
| Headstart/Preschool   | \$10      | One Year AVT               | \$100                          |
| Kindergarten          | \$10      | Two Year AVT               | \$200                          |
| Elementary School     | \$20      | AA, AS, AAOT               | \$200                          |
| Middle School         | \$50      | BA/BS                      | \$75 plus a Pendleton blanket  |
| High school/GED       | \$100     | MA                         | \$300                          |
|                       |           | PhD                        | \$300 plus a Pendleton blanket |

## Thinking of attending college during the 2022-2023 Academic year? Here's what you need to know

↔ FAFSA Opens for Applications Oct. 1st  
(at [www.fafsa.ed.gov](http://www.fafsa.ed.gov))

*\*If applying for Higher Education funds for the 2022-2023 academic year, students must complete their FAFSA by June 30th*

↔ CTSI Higher Education Grant Application Due June 30th  
[www.ctsi.nsn.us/wp-content/uploads/2020/12/Higher-Education-Application.pdf](http://www.ctsi.nsn.us/wp-content/uploads/2020/12/Higher-Education-Application.pdf)

↔ CTSI Graduate Application Due June 30th  
[www.ctsi.nsn.us/wp-content/uploads/2020/12/Graduate-Student-Application.pdf](http://www.ctsi.nsn.us/wp-content/uploads/2020/12/Graduate-Student-Application.pdf)

• Graduate applicants must apply to the American Indian Graduate Center for scholarship funding, to be eligible for CTSI Funding (at [www.aigcs.org](http://www.aigcs.org))

• American Indian Graduate Center applications open as early as December and **close as early as May each year**. It is your responsibility to be aware of and meet the AIGC scholarship deadlines.

Contact an Education Specialist in your area for more information.

Siletz Area &  
Out-of-State  
Alissa Lane-Keene  
AlissaL@ctsi.nsn.us  
541-444-8373

Eugene Area  
Candace Hill  
CandaceH@ctsi.nsn.us  
541-484-4234

Portland Area &  
Washington  
Katy Holland  
KatyH@ctsi.nsn.us  
503-238-1512

Salem Area  
Sonya Moody-Jurado  
SonyaMJ@ctsi.nsn.us  
503-390-9494

Visit [www.ctsi.nsn.us/post-secondary-education/](http://www.ctsi.nsn.us/post-secondary-education/) for applications.

## Expansion of the Legal Assistance Program Update

Ever use CTSI court or wonder how CTSI court works? Ever need help with a legal problem? Do you have opinions about what the Tribe can do to better support its members with legal concerns?

CTSI has begun the process of assessing current legal assistance options and looking at options for how the Tribe might potentially expand legal assistance for tribal members and maybe others who appear in the Siletz Tribal Court. We have partnered with The Whitener Group (TWG), a tribal consulting firm owned by members of the Squaxin Island Tribe, to guide this process.

TWG is working with us to gather information through surveys, one-on-one meetings, and strategic planning sessions. Through these efforts TWG will identify the Tribe's core values and basic legal assistance needs which it will use as the foundation for the planning process. TWG, with key stakeholders, will then draft a program mission and an actionable implementation plan. There will be repeated opportunities for review and adjustment. Once those basic components of the implementation plan are determined, TWG will meet with Tribal Council and facilitate a decision-making process to determine timelines, key staff actions, and a program budget. TWG will then finalize the plan and begin to assist the Tribe with its implementation.

But as we get started, we would like to have YOUR input on this process. With that in mind we have put together a short survey to gather input.

Please either go to this URL or scan this QR code to take the survey by January 31, 2022! It is short, we promise.



<https://www.surveymonkey.com/r/siletz>

---

## UPDATE:

Last month in the newsletter one of our suggested activities was **Reindeer Food** – Make some reindeer food with dried oats and some glitter. Sprinkle some in the yard on Christmas Eve for Santa's reindeer. **Please note, to protect our environment and our plant and animal relatives, oats are fine, just don't include glitter.**

**Home Visiting Program – 477/SSP Program**

# Siletz Home Visiting Program

Now serving all federally recognized and Alaskan Native families who meet eligibility criteria!!

## Home Visiting Provides:

- Parenting and life skills for successful and positive parenting
- Support and encouragement
- Resources and referrals
- A culturally sensitive, evidence based curriculum
- Ongoing services from prenatal until child is 3 years old
- Virtual Visits currently

## For more information contact:

Danelle Smith  
Siletz and Coast Range  
541-444-9603 or  
1-800-922-1399  
[danelles@ctsi.nsn.us](mailto:danelles@ctsi.nsn.us)

Lori Christy  
Salem, Portland and Surrounding Areas  
503-390-9494  
[loric@ctsi.nsn.us](mailto:loric@ctsi.nsn.us)

Cathy Ray  
Eugene and Surrounding Areas  
541-484-4234  
[catheriner@ctsi.nsn.us](mailto:catheriner@ctsi.nsn.us)

Go to [www.ctsi.nsn.us](http://www.ctsi.nsn.us) home visiting to view past success stories.

## Eligibility requirements:

- Live in 11-County Service Area
- Family is expecting or has an infant under twelve months of age.
- American Indian/Alaskan Native head of household or dependent child and meet one of the following criteria—
  - Income below 300% federal poverty level for last 30 days
  - Household that resides in rural location that has limited employment opportunities
  - First time parent
  - Household with at least one adult without a post-secondary certificate
  - Family experienced trauma, chemical dependency or mental health barriers.
- Other eligibility criteria may apply so contact our staff if you have questions.

## 477-Self Sufficiency Program – Essential Services during COVID

The 477-Self Sufficiency Program (SSP) is open and providing essential services to eligible families and individuals residing in the CTSI 11-County Service Area. Due to Covid-19, all tribal offices are closed to the public. We are still accepting applications and conducting appointments over the phone, through email or video conference. The SSP has prioritized the following services:

- Pre-Temporary Assistance for Needy Families (Pre-TANF) / Non-Recurrent Short Term Benefits: Siletz families below 185% of the Federal Poverty Level (FPL) may be eligible for short-term financial assistance that doesn't exceed 4 months. The financial assistance is meant to provide basic needs and address short-term emergent needs;
- Regular Temporary Assistance for Needy Families: Siletz families below the countable income limits and FPL may be eligible for monthly grant assistance to meet basic needs;
- General Assistance for Single Adults: Siletz single adults below the countable income limits and FPL may be eligible for monthly grant assistance to meet basic needs;
- Emergency Assistance: Siletz families or single adults may be eligible for support services to prevent eviction or utility shut off. Income guidelines apply;
- Classroom Training: the Program is still providing financial assistance (tuition, stipends and support services) to eligible Native Americans attending GED, Higher Education or Vocational/Occupational Training.
- Childcare Assistance: The Program offers childcare assistance to eligible TANF families while they engage in work or self-sufficiency activities;
- Foster Care Support Services: Childcare assistance to employed foster parents. The Program covers "working hours only" and limited respite.
- Home Visiting: The Program is accepting new families into the Early Childhood Home Visiting Program and working with current families to provide lessons in-person. Staff and families will be required to adhere to social distancing and wearing masks.
- Direct Placement: Support services (work clothing, transportation, tools, etc.) for Native Americans that recently gained employment. Must apply within 7-days of hire.

Other services such as Work Experience and On-the-Job Training may be available on a limited basis.

If you recently lost your employment due to Covid-19 and need assistance to meet your basic needs, please contact your local CTSI Tribal Office for an application. Additional eligibility criteria apply. SSP staff will reach out to you by phone or email. You can also email [477SSP@ctsi.nsn.us](mailto:477SSP@ctsi.nsn.us) for more information. Please include your name, phone number and the city/county you reside in.



# EMERGENCY ASSISTANCE

Confederated Tribes of Siletz Indians 477-SSP

## Eviction

Are you being evicted or facing homelessness?

## Utility Shut Off

Have received shut off notice for utilities (electric, water, sewer)

## Native American

Enrolled Siletz Tribal Member and reside in the CTSI service area.

## Exhausted all Resources

You have utilized all other funding sources i.e. Housing Dept. LIHEAP, other Community agencies.

## 100% of Federal Poverty Level

Not sure what your poverty level is? Call one of the area offices.

## Taking Action

CTSI Area Offices:

Siletz Administration Office: Jamie (541) 444-8266

Salem Area Office: Angelica (503) 390-9494

Portland Area Office: Anna (503) 238-1512

Eugene Area Office: Jen (541) 484-4234

\*\*other criteria may apply.



CONFEDERATED TRIBES OF SILETZ INDIANS



# CLASSROOM TRAINING

FOR FEDERALLY RECOGNIZED TRIBAL MEMBERS AND DESCENDANTS

**APPLY TODAY!!**

HIGHER EDUCATION ASSISTANCE

VOCATIONAL EDUCATION/OCCUPATIONAL TRAINING

GED/ADULT BASIC EDUCATION

- ASSISTANCE WITH ENROLLMENT
- TUITION ASSISTANCE
- SUPPORT SERVICES FOR BOOKS, SUPPLIES, FEES, ETC
- CLASSROOM-TRAINING STIPEND (LIMITED TO 15 HOURS EACH WEEK)

SILETZ ADMINISTRATION OFFICE: JAMIE (541) 444-8266

PORTLAND AREA OFFICE: TAMRA (503) 238-1512

SALEM AREA OFFICE: ANGELICA (503) 390-9494

EUGENE AREA OFFICE: CATHY (541) 484-4234

MUST MEET ELIGIBILITY CRITERIA AND SERVICES ARE AVAILABLE ON A BUDGETARY BASIS





# Siletz Tribal Vocational Rehabilitation Program (STVRP)

STVRP is here to assist members of **ANY** federally recognized Tribe to overcome barriers to employment. We work with individuals who have disabilities and are living within the Confederated Tribes of Siletz Indians 11 county service area.

## Examples of Services:

- Guidance and Counseling
- Referral to Services
- Employment Services
- Resume Writing
- Interviewing Techniques
- Job Coaching
- Culturally Relevant Individualized Services
- Evaluations and Assessments
- Training Placement Opportunities
- Adaptive Equipment



For more information about the STVRP, please inquire at 1-800-922-1399. Services are provided in ALL area offices, however, to inquire about services, ask to be transferred to the office nearest you listed below.

### SALEM AREA OFFICE

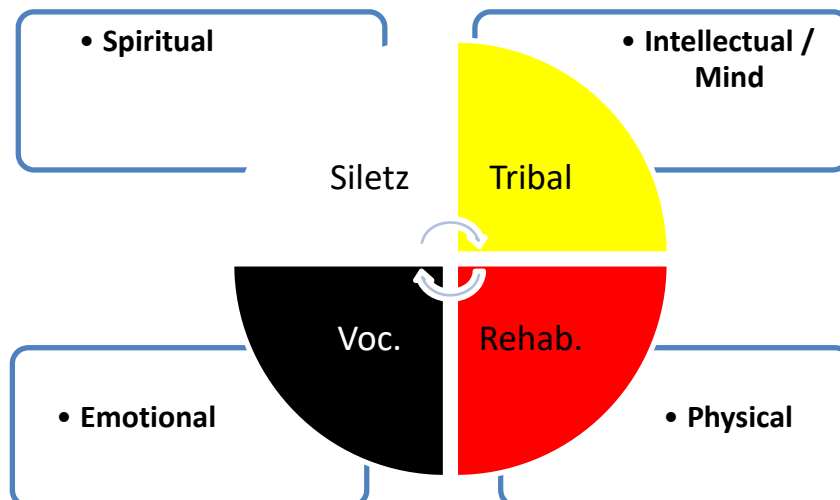
3160 Blossom Dr. NE, Ste. 105  
Salem, OR 97305

### SILETZ ADMIN. OFFICE

201 SE Swan Ave  
Siletz, OR 97380

**SALEM** - **Toni Leija**, Counselor/Job Developer

**SILETZ** – **RACHELLE ENDRES**, Counselor/Job Developer



# Recruiting Ages 19-26 to join the Eugene/Springfield COMMUNITY WILDFIRE PROTECTION CORPS



**A BETTER YOU** Gain certifications and work experience needed to open career pathways and get you moving towards your dream job.

**A BETTER PLANET** Spend 12.5 weeks working to create resilient communities in the face of Wildfire. Play a vital role in improving your community and the environment.

Northwest Youth Corps' Community Wildfire Protection Corps crews integrate team-based work projects, education, and professional trainings into a program that encourages personal growth and the development of resource management skills.

## Schedule:

- 1/26/2022 to 4/22/2022
- Members generally work M-F
- Crews work in Eugene/Springfield, OR area
- This is a day program (no camping/housing provided)

## Benefits:

- Members receive a living allowance of \$500/week prorated throughout their term of service, along with earning a \$1,678 AmeriCorps Education Award upon the successful completion of the program.
- Crew members gain industry-recognized credentials and skills that can be added to their resume and help in gaining access to outdoor related careers.

## COVID-19 Safety Measures:

Proven COVID-19 safety protocols are in place to keep members and staff healthy, and have maintained an excellent safety record. Visit [www.nwyouthcorps.org/m/covid19](http://www.nwyouthcorps.org/m/covid19) to read our COVID management protocols.

## For More Info:

Contact Zeke Zeff at [ZekeZ@nwyouthcorps.org](mailto:ZekeZ@nwyouthcorps.org) or call (215) 667-9028

## Qualifications:

- 19-26 years old with high school diploma or GED
- Ability to lift 75 lbs., hike several miles, and be on foot for 8-10 hours per day
- Positive mental attitude, willingness to learn and have commitment to success
- Ability to pass a criminal history background check and follow our COVID safety protocols
- Obtain First Aid/CPR certification prior to start (reimbursement available)

funded by



**AmeriCorps**



**NWYOUTHCORPS.ORG**

# Siletz Community Health



## Siletz 1-800 Numbers

|                                |                |
|--------------------------------|----------------|
| Siletz Central Office          | 1-800-922-1399 |
| Siletz Community Health Clinic | 1-800-648-0449 |
| Purchased Referred Care        | 1-800-628-5720 |
| Siletz Behavioral Health       | 1-800-600-5599 |

**Siletz Community Health Clinic registration forms and Chemawa Indian Health Center applications** are available at the Eugene Area Office. If you have questions regarding eligibility for services, you may contact:

**Jamie Boe**  
**Community Health Advocate**  
**541-484-4234**  
[JamieBoe@ctsi.nsn.us](mailto:JamieBoe@ctsi.nsn.us)



## Oregon Health Plan (OHP) Applications

Available at the Eugene Area Office

You may qualify for the Oregon Health Plan! OHP provides health care coverage to eligible, low income Oregonians. If you would like to apply, you may stop by and pick up an application, or apply online at [www.OregonHealthCare.gov](http://www.OregonHealthCare.gov)  
Telephone 1-800-699-9075

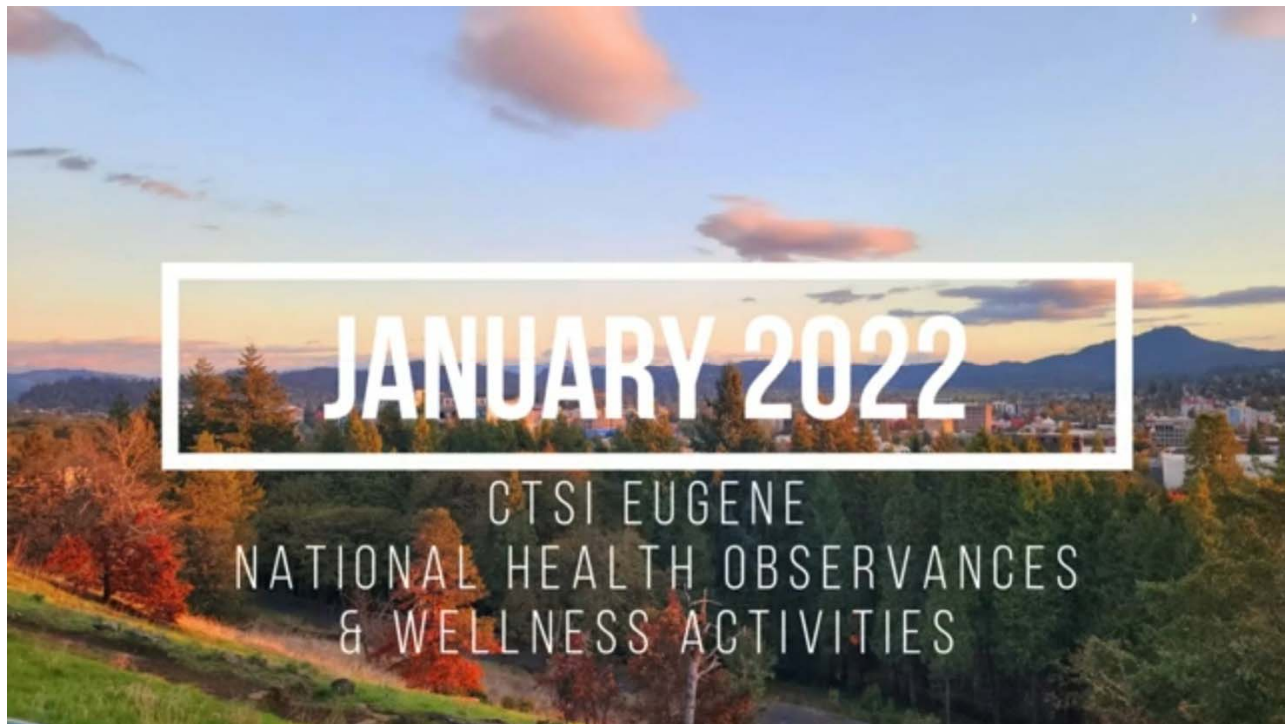
We are here to assist you with any questions that you may have about OHP.

**Contact Jamie Boe,**  
**Community Health Advocate, at 541-484-4234**

## Siletz Mail Order Pharmacy

If you need a prescription refill, please call the Siletz Community Health Clinic Pharmacy 7-10 days before you run out of your prescription. This allows the pharmacy time to contact your health care provider, if necessary, and to mail it to you.

Call **1-800-648-0449** and enter **ext.1624**. Follow the voicemail instructions. If you need assistance, you may call Jamie, Community Health Advocate at 541-484-4234



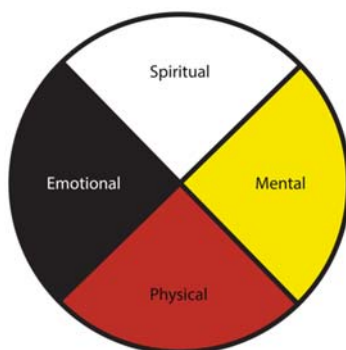
If you are interested in learning some quick facts about other January 2022 National Health Observances, please check out the 'CTSI Eugene CHA' channel on YouTube by following this link:

<https://youtu.be/GfxWL8OVaVE>

If you have ideas for simple and healthy recipes, or a wellness activity idea you would like me to share, please reach out to Jamie Boe, Community Health Advocate.

Call: 541-484-4234

Email: [JamieBoe@ctsi.nsn.us](mailto:JamieBoe@ctsi.nsn.us)



# January

## National Glaucoma Awareness Month

Jamie Boe, Community Health Advocate

Source: [www.glaucoma.org](http://www.glaucoma.org)

Glaucoma is a group of eye diseases that primarily affects the middle aged and elderly populations, although it can affect people of all ages. More than 3 million people in the United States have Glaucoma. This number could increase to 4.2 million by 2030. With almost no symptoms, as much as 40% of vision can be lost without noticing. Damage to the optic nerve, which is responsible for carrying images from the eye to the brain, is what causes Glaucoma. Although there is no cure for glaucoma, medication or surgery can slow, or even prevent further vision loss. Early detection is key, so be sure to get regular eye exams.

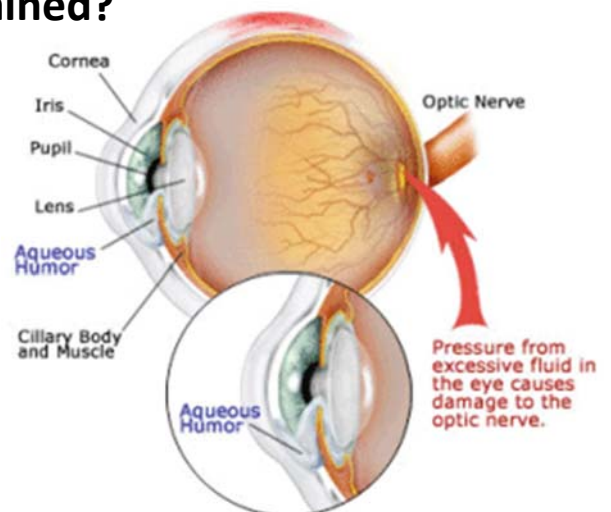
### Risk Factors for Glaucoma

- People of African, Latino, and Asian descent.
- People over the age of 60.
- People who have family members with Glaucoma.
- Diabetes
- People with severe near sightedness.



### How often should I get my eyes examined?

- Infants: First exam at 6 months of age.
- Children: Every 2 years.
- Ages 20 to 39: Every 5 years.
- Ages 40 to 54: Every 2 to 4 years.
- Ages 55 to 64: Every 1 to 3 years.



# *Happy New Year*

As we start off the New Year (2022), several people will make a resolution. Whether it's exercising, eating healthier, take a vacation, go back to school, quit smoking, etc. Of these resolutions will require a change in lifestyle, for example; eating more fruits and vegetables, working on portion control during meals, start going to the fitness center or incorporating more physical activities into your routine.

## **If you are looking at quitting smoking, here are a few tips to help with your success:**

1. Make a list of reasons on why you want to “quit smoking”.
2. Choose a method whether it be “cold turkey”, “tapering”, using a app or a texting program, nicotine replacement therapy (NRT's). There are several methods, if you need assistance or have a question, contact the Tobacco Prevention Coordinator at 541-444-9682.
3. Set a quit date. Pick a day that works for you, not a day that will be too stressful. Write it down and commit to it.
4. Let your family and friends know that you are quitting and ask them to support you on your new journey. Let them know that you may need to contact them when your going through a rough time.
5. Reward yourself. Use the money that you will save on cigarettes and treat your self to the new you. You can buy yourself something small and frequent, or save up and get something nice. **You deserve it.**

## **Cancers associated with commercial tobacco use**

### ***Cervical Cancer:***

Cervical cancer occurs when the cells of the cervix grow abnormally and invade other tissues and organs of the body. When it is invasive, this cancer affects the deeper tissues of the cervix and may have spread to other parts of the body (metastasis), most notably the lungs, liver, bladder, vagina, and rectum.

There are two main types of cervical cancer: squamous cell carcinoma and adenocarcinoma. Each one is distinguished by the appearance of cells under a microscope.

***Squamous cell carcinomas*** begin in the thin, flat cells that line the bottom of the cervix. This type of cervical cancer accounts for 80 to 90 percent of cervical cancers.

***Adenocarcinomas*** develop in the glandular cells that line the upper portion of the cervix. These cancers make up 10 to 20 percent of cervical cancers.

**Commercial Tobacco Quit line 1-800-QUIT-NOW  
AI/AN Line now available (option 7) 1-800-784-8669**

# JOM WINTER ACTIVITIES

Open to all JOM registered youth in the 11-county service area

Register each month by the due dates below to receive a fun activity package!

## Dates:

- January - Opens 1/3/22 and closes 1/13/22
- February - Opens 2/1/22 and closes 2/14/22

**Contact your area Education Specialist to sign up**

### Portland Area

(503) 238-1512  
katyh@ctsi.nsn.us

### Siletz Area

(541) 444-8373  
alissal@ctsi.nsn.us

### Salem Area

(503) 390-9494  
sonyamj@ctsi.nsn.us

### Eugene Area

(541) 484-4234  
candaceh@ctsi.nsn.us



# SILETZ TRIBAL SMALL BUSINESS WORKSHOP

Join us on Thursday, February 17th at 6pm via Zoom to discuss how to start your own business, how to support a small business, and other business topics with guests from:

- The Oregon Native American Chamber (ONAC)
- Our Native American Business Network (ONABEN)
- Siletz Tribal Business Corporation (STBC)



**CONTACT YOUR AREA EDUCATION SPECIALIST**

**TO SIGN UP AND GET A ZOOM LINK**

**Portland Area**  
(503) 238-1512  
katyh@ctsi.nsn.us

**Siletz Area**  
(541) 444-8373  
alissal@ctsi.nsn.us

**Salem Area**  
(503) 390-9494  
sonyamj@ctsi.nsn.us

**Eugene Area**  
(541) 484-4234  
candaceh@ctsi.nsn.us

# Enrolled JOM Student ***School Supply/PPE Stipend Program***



Enrolled JOM Students are eligible to apply for a School Supply/PPE stipend for the remainder of the current academic year.

*These funds are to ensure students can purchase traditional school supplies and the necessary PPE (masks, sanitizer, wipes, etc.) to continue being safe in schools, on buses and in after school programs.*

Completed applications must be received by the following deadlines: **January 26, 2022 by 4:30 PM.** Microsoft form must be completed by **January 28, 2022 @ 4:30 PM.**

**Contact the Education Specialist in your service area to request an application.**

Candace Hill  
Eugene Area Office  
(541) 484-4234  
CandaceH@ctsi.nsn.us

Katy Holland  
Portland Area Office  
(503) 238-1512  
KatyH@ctsi.nsn.us

Sonya Moody-Jurado  
Salem Area Office  
(503) 390-9494  
SonyaMJ@ctsi.nsn.us

Jeff Sweet  
Siletz Area  
(541) 444-8207  
JeffS@ctsi.nsn.us





**SIGN UP TODAY FOR WINTER SESSION  
ON-LINE LANGUAGE CLASSES**

**LEARN  
NUU-WEE-YA'**

**TUESDAYS JANUARY 11-MARCH 15**

5:00 PM-BEGINNING CONVERSATION 1

5:45 PM- BEGINNING CONVERSATION 2

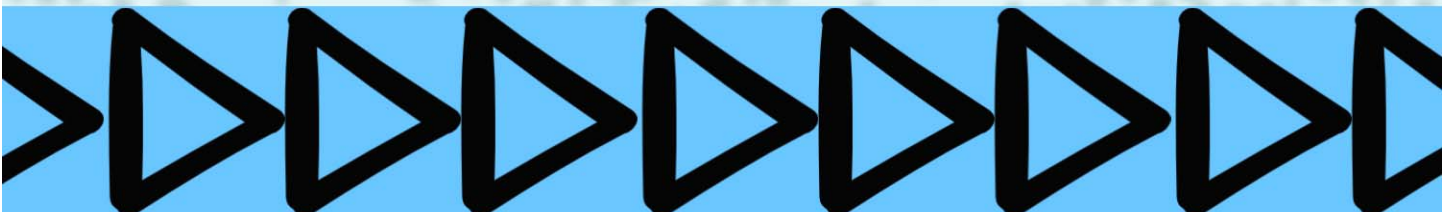
**THURSDAYS JANUARY 13-MARCH 17**

5:00 PM-ONGOING CONVERSATION

**SATURDAYS 2/5, 2/26, 3/12**

NOON-IMMERSION CONVERSATION HOUR

TO SIGN UP CONTACT NICK VILES AT [NICKV@CTSI.NSN.US](mailto:NICKV@CTSI.NSN.US) OR X1757



# CTSI VIRTUAL CULTURE NIGHTS



ALL TRIBAL MEMBERS AND FAMILIES WELCOME

## ***Upcoming Dates:***

***January 12 at 6 pm : Pine Nuts***

***February 9 at 6 pm: Hazel***

***Sponsored by the Education and Culture Departments  
Contact Nick Viles at [nickv@ctsi.nsn.us](mailto:nickv@ctsi.nsn.us) or x1757 to sign up***



# We're Back!

Calling all Gamers, K-12

## CTSI

### Minecraft Gathering

**JANUARY 22,  
2022 @ 10:30 AM**

## Contact:

[elizabethm@ctsi.nsn.us](mailto:elizabethm@ctsi.nsn.us)

for registration



# Save the date! Planning Community Meetings

The Eugene Area Community meeting is scheduled for February 10<sup>th</sup>, 2022.

The meeting will be similar to the meetings we've had in the past, and will be dedicated to primarily **listening** to member concerns and bringing updates.

Special items for this meeting will be a discussion of the Head Start program led by DeAnn Brown and a presentation by the Health department.

We will be listening to you for your comments, criticisms, expectations and your priorities for our future planning.

Due to Covid restrictions, this will be a Zoom meeting.

Topic: Eugene Area Community Meeting

Time: February 10, 2022 05:00 PM Pacific Time (US and Canada)

An invitation will be sent closer to the meeting date.

## **Bring your voices and questions to the meeting**

Future meetings include:

1/27 Salem area

2/24 Siletz area

3/3 Portland area

3/17 Out of Service area

All members meetings

4/21

7/14

11/13

# Produce Plus Food Rescue



## Siletz Tribal Members:

If you or your family would like to share in some *FREE*, fresh produce, you may pick it up at the Siletz/Eugene Area office on Tuesdays between 2:00 and 4:00 pm. Any produce that is not picked up at this time can be picked up later on in the week from 9 am-4pm. It just will not be as fresh.

Since our tribal office remains closed to the public during the COVID-19 pandemic, the food distribution will take place outside the building. Face masks and social distancing are required. If you don't have a mask, one will be provided.

Please bring your own bags or cooler to transport your food. You may call ahead and check on the availability of food.

Siletz Office: 541-484-4234  
2468 W. 11<sup>th</sup> Avenue, Eugene, OR

This food is collected and distributed by Food for Lane County, Eugene, OR. The Siletz tribe and FFLC are working in a joint effort to alleviate hunger in our community.

# USDA distribution dates for January 2022

## Siletz

|           |                         |                 |
|-----------|-------------------------|-----------------|
| Monday    | January 3 <sup>rd</sup> | 9 A.M. – 3 P.M. |
| Tuesday   | January 4 <sup>th</sup> | 9 A.M. – 3 P.M. |
| Wednesday | January 5 <sup>th</sup> | 9 A.M. – 3 P.M. |
| Thursday  | January 6 <sup>th</sup> | 9 A.M. – 3 P.M. |
| Friday    | January 7 <sup>th</sup> | 9 A.M. – 3 P.M. |

## Salem

|           |                          |                     |
|-----------|--------------------------|---------------------|
| Tuesday   | January 18 <sup>th</sup> | 1:30 – 6:30 P.M.    |
| Wednesday | January 19 <sup>th</sup> | 9 A.M. – 6:30 P.M.  |
| Thursday  | January 20 <sup>th</sup> | <b>By Appt Only</b> |



**LIKE us on Facebook at Siletz Tribal FDPIR.** We would like to see more people sharing their recipes on our FB page. Like us at SILETZ TRIBAL FDPIR.

Sammy Hall, Warehouseman/Clerk

[sammyh@ctsi.nsn.us](mailto:sammyh@ctsi.nsn.us)

FAX: 541-444-8306

Siletz: 541-444-8279

Salem: 503-391-4296

# January 2022

| Sun | Mon   | Tue   | Wed  | Thu   | Fri   | Sat  |
|-----|---|---|--|---|---|--|
| 26  | 27  | 28<br>Time Sheets Due<br>Produce Plus Food 2-4pm  | 29<br>Produce Plus Food 9-4pm  | 30<br>Produce Plus Food 9-4pm   | 31<br>CLOSED<br> | 1<br> |
| 2   | 3<br>JOM Winter Activities Sign-up Starts<br>USDA Distribution Siletz 9-3pm                         | 4<br>USDA Distribution Siletz 9-3pm<br>Produce Plus Food 2-4pm<br>Language Class Beginning Conversation 5pm       | 5<br>USDA Distribution Siletz 9-3pm<br>Produce Plus Food 9-4pm       | 6<br>USDA Distribution Siletz 9-3pm<br>Produce Plus Food 9-4pm<br>Language Class Continuing Conversation 5pm                    | 7<br>Pay Day<br>Produce Plus Food 9-4pm   | 8<br>Elders Meeting Zoom 1pm   |
| 9   | 10  | 11<br>Time Sheets Due<br>Produce Plus Food 2-4pm<br>Language Class Beginning Conversation 5pm                     | 12<br>Produce Plus Food 9-4pm<br>Virtual Culture Night Pine Nuts 6pm | 13<br>JOM Winter Activities Sign-up Ends<br>Produce Plus Food 9-4pm<br>Language Class Continuing Conversation 5pm               | 14<br>Produce Plus Food 9-4pm   | 15   |
| 16  | 17<br>CLOSED<br> | 18<br>Produce Plus Food 2-4pm<br>USDA Distribution Salem 1:30-6:30pm<br>Language Class Beginning Conversation 5pm | 19<br>Produce Plus Food 9-4pm<br>USDA Distribution Salem 9-6:30pm    | 20<br>Pay Day<br>Produce Plus Food 9-4pm<br>USDA Distribution Salem By Appt. ONLY<br>Language Class Continuing Conversation 5pm | 21<br>Produce Plus Food 9-4pm   | 22<br>Minecraft Gathering 10:30am  |
| 23  | 24  | 25<br>Time Sheets Due<br>Produce Plus Food 2-4pm<br>Language Class Beginning Conversation 5pm                     | 26<br>Produce Plus Food 9-4pm  | 27<br>Produce Plus Food 9-4pm<br>Language Class Continuing Conversation 5pm   | 28<br>Produce Plus Food 9-4pm   | 29   |

The Confederated Tribes of Siletz Indians  
The Eugene Area Office Staff  
541-484-4234 1-800-922-1399

Jessica Hibler, Supervisor x1751 [jessicah@ctsi.nsn.us](mailto:jessicah@ctsi.nsn.us)  
Candace Hill, Education Specialist x1763 [candaceh@ctsi.nsn.us](mailto:candaceh@ctsi.nsn.us)  
Nick Viles, Language and Traditional Arts Instructor x1757 [nickv@ctsi.nsn.us](mailto:nickv@ctsi.nsn.us)  
Jenifer Jackson, Tribal Service Specialist/477SSP x1755 [jeniferj@ctsi.nsn.us](mailto:jeniferj@ctsi.nsn.us)  
Cathy Ray, Intake Specialist/Job Coach x1756 [catheriner@ctsi.nsn.us](mailto:catheriner@ctsi.nsn.us)  
Jamie Boe, Community Health Advocate x1753 [jamieboe@ctsi.nsn.us](mailto:jamieboe@ctsi.nsn.us)  
Nora N Williams-Wood, Clerk x1750 [noraw@ctsi.nsn.us](mailto:noraw@ctsi.nsn.us)  
Verdene McGuire, EAO Elders [VDenie101@gmail.com](mailto:VDenie101@gmail.com)  
Vacant, Elders On-Call Transport

**New Year** is all about getting another chance.  
A chance to forgive, to do better, to do more, to give more, to love more.  
And stop worrying about 'what if' and **start embracing** what would be.



The Confederated Tribes of Siletz Indians  
Eugene Area Office  
2468 W 11<sup>th</sup> Avenue  
Eugene Oregon 97402

**2021/2022  
HUNTING/FISHING/GATHERING  
INCENTIVES**

Reminder to all Siletz Tribal Members: Please report all harvests of deer, elk, salmon and shellfish to the Natural Resources Department. The name on the tag/permit will be submitted into a drawing after the seasons end and could receive one of the following Cabela's Gift Card incentives.

**HUNTING INCENTIVES**  
\$100    \$75    \$50  
CABELAS GIFT CARDS

**FISHING INCENTIVE**  
\$50  
CABELAS GIFT CARD

**SHELLFISH INCENTIVE**  
\$50  
CABELAS GIFT CARD

Please report all harvests to:  
Mike Kennedy  
541-444-8232  
[mikek@ctsi.nsn.us](mailto:mikek@ctsi.nsn.us)  
or  
Denise Garrett at  
541-444-8227  
[deniseq@ctsi.nsn.us](mailto:deniseq@ctsi.nsn.us)